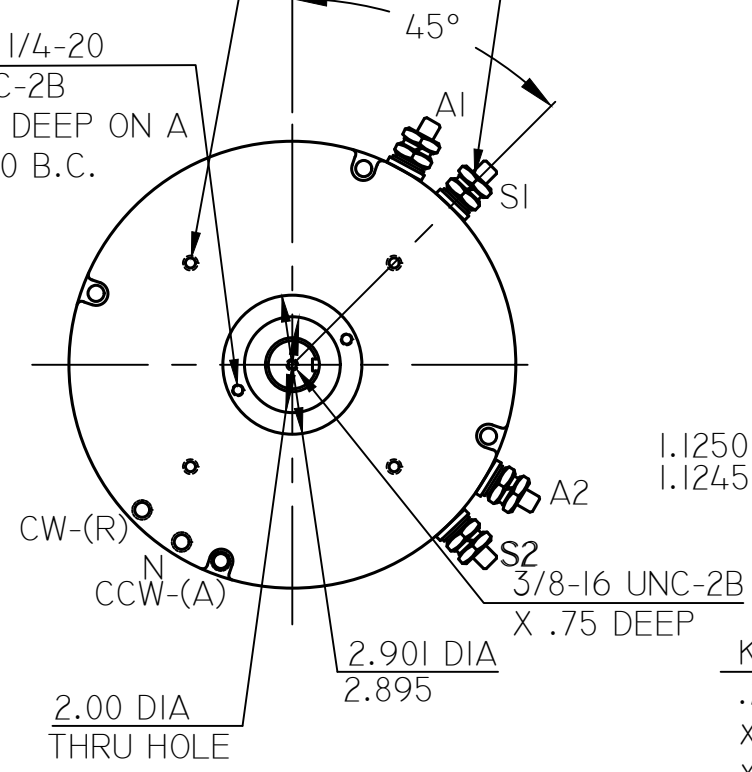
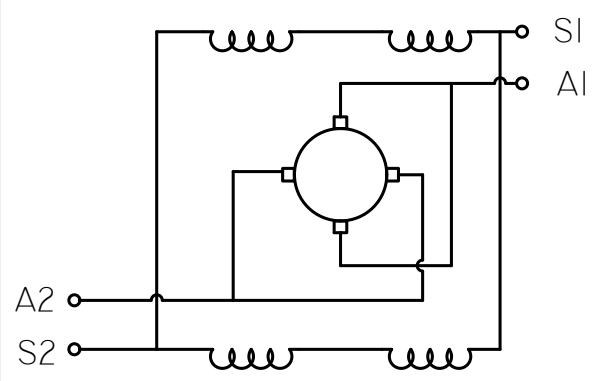


(4) THRU HOLES  
 $\frac{5}{16}$ "-18 UNC-2B  
 ON A 6.00 DIA. B.C.  
 .560 DP  
 90° APART

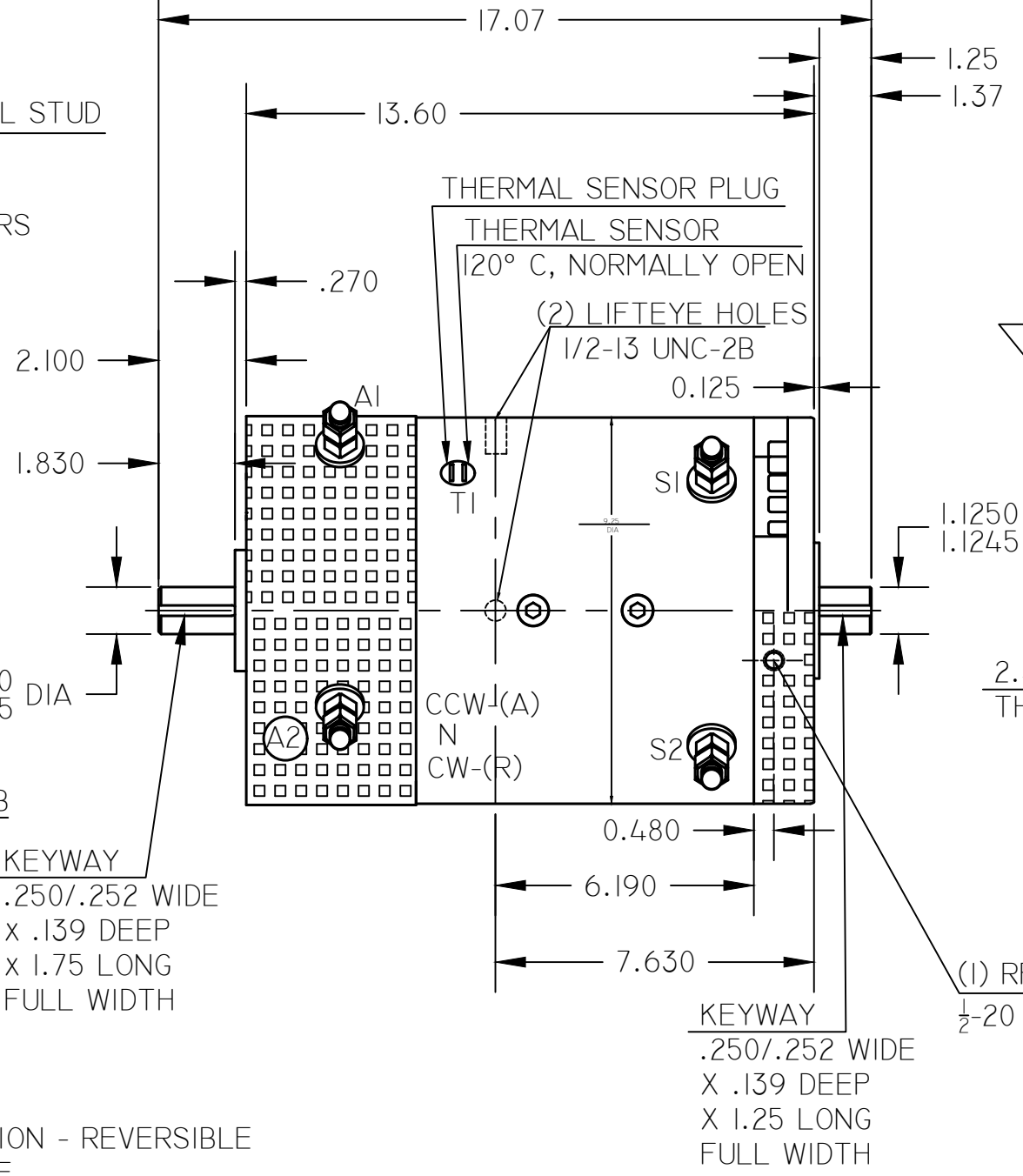
(2) 1/4-20  
 UNC-2B  
 .50 DEEP ON A  
 2.50 B.C.



C.E. END (REF)

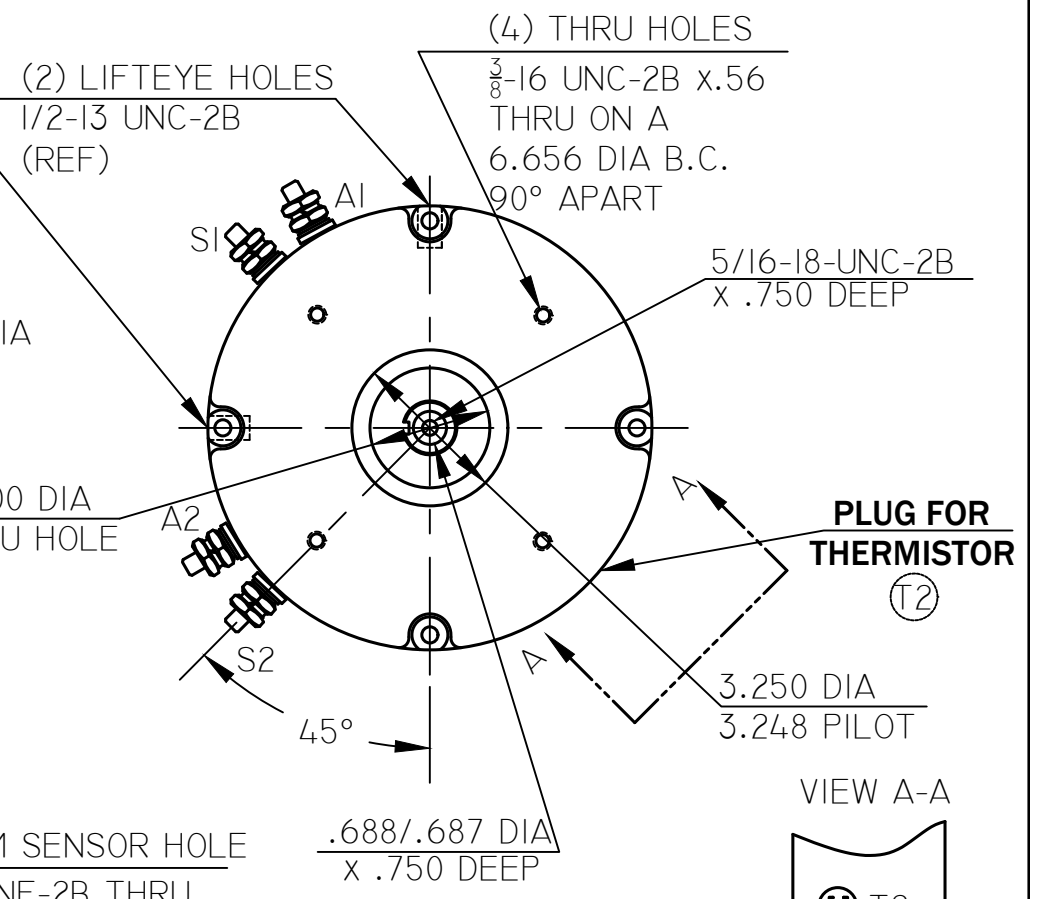


(4) TERMINAL STUD  
 $\frac{1}{2}$ -13 UNC-2A  
 W/NUTS &  
 LOCKWASHERS

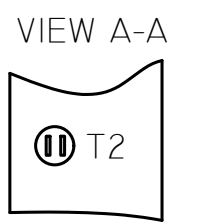


DESCRIPTION

9", IMPULSE 9, 3 POSITION TIMING, ASSEMBLED  
 IN THE ADVANCED TIMING POSITION  
 1.250" CE SHAFT DIA., MOTOR WEIGHT: 155 LBS.



D.E. END (REF)



NOTE:  
 LEFT CONTACT  
 RED WIRE

ROTATION - REVERSIBLE  
 C.W.D.E.  
 CONNECT S-1 TO ONE BATTERY TERMINAL  
 CONNECT S-2 TO A-1  
 CONNECT A-2 TO OTHER BATTERY TERMINAL  
 C.C.W.D.E.  
 CONNECT S-1 TO ONE BATTERY TERMINAL  
 CONNECT S-2 TO A-2  
 CONNECT A-1 TO OTHER BATTERY TERMINAL

NOTES:  
 IMPULSE 9"  
 "ADV TIMING"  
 "1/2-13 TERMS"  
 SPLIT BRUSH  
 LARGE CE 1.125" DIA.  
 DEFLECTOR FAN

|  |               |  |   |
|--|---------------|--|---|
| <b>WE WARFIELD ELECTRIC CO., INC.</b>  |               | 175 INDUSTRY AVENUE/FRANKFORT, IL 60423-1685 |   |
| ORIG. DWG FROM<br>2000008259NA-03  | CAD BY<br>GJL | DATE<br>05/05/15                             | DESCRIPTION<br>OUTLINE                                      |
| TOLERANCE UNLESS OTHERWISE NOTED:<br>.X = +OR-.1<br>.XX = +OR-.02<br>.XXX = +OR-.005<br>ANG. = +OR-.5 DEG. | CHK'D1        | DATE   | NOTE<br>LARGE CE END<br>1/2"-13 TERMINAL BOLTS<br>IMPULSE 9 |
|  | CHK'D2        | DATE   | SCALE<br>1:4  |
|  | APP'D<br>GFH  | DATE<br>05/07/15                             | PART NO.<br>2000008259NAL                                   |
|  |               |  | ISSUE<br>01   |