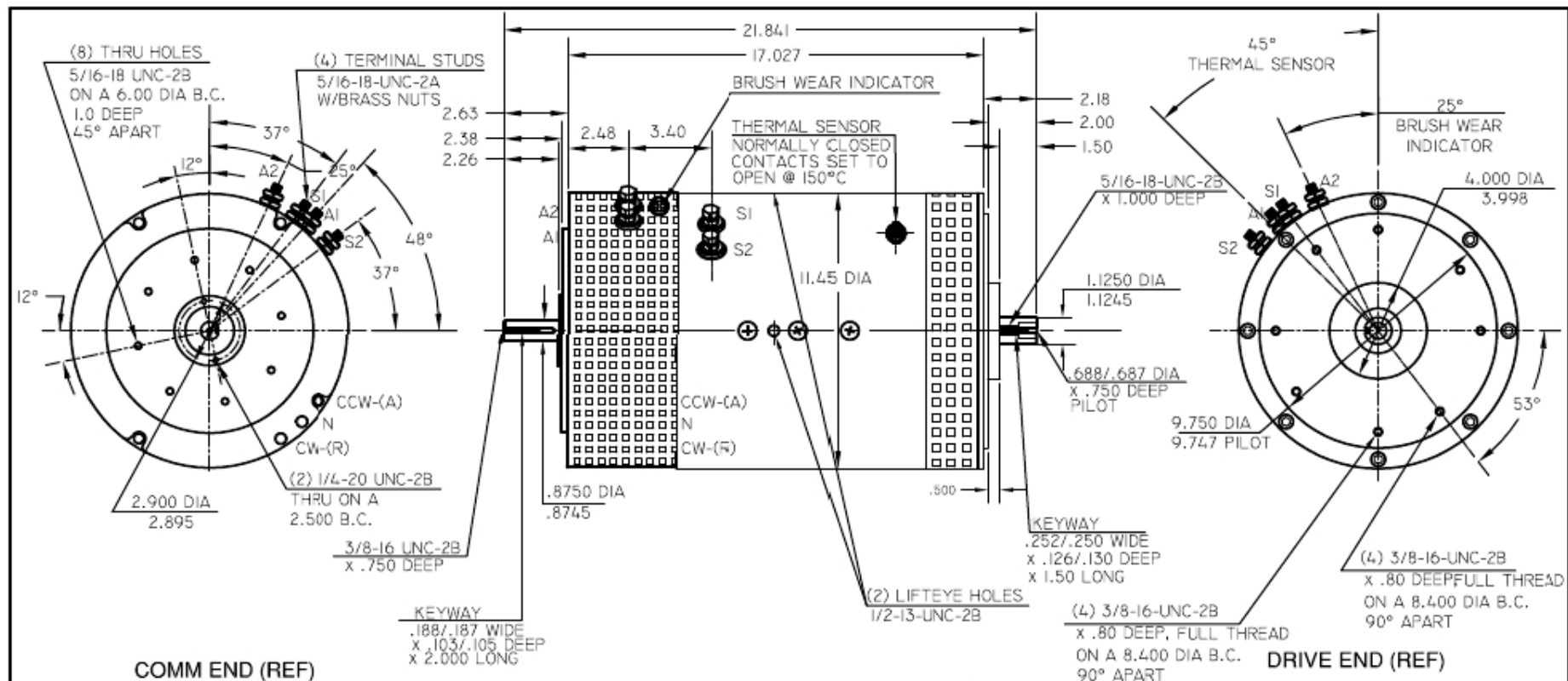


NetGain Motors, Inc.

800 South State Street / Suite 4 / Lockport, IL 60441 / 630-243-9100 / 630-685-4054 (FAX)

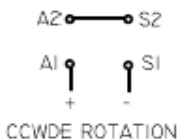
WARP 11™

Part Number 00-08311



DESCRIPTION

WARP 11, DOUBLE ENDED, 3 POSITION TIMING, .875" DIA. TAIL ASSEMBLED IN THE ADVANCED TIMING POSITION
2 SEPARATE BOLT HOLE MOUNTING PATTERNS ON BOTH CE AND DE ENDS. TERMINALS ARE SHOWN IN THE ADVANCED POSITION.



WE WARFIELD ELECTRIC CO., INC.			
175 INDUSTRY AVENUE/FRANKFORT, IL 60423-1685			
ORIG. DWG FROM:	CAD BY: G.J.L.	DATE: 01/19/10	DESCRIPTION: MOTOR OUTLINE
CHR: M.J.B.	DATE: 08/05/09	MATERIAL:	SCALE: 1/4"
TOLERANCE UNLESS OTHERWISE NOTED: .X = +OR-.1 .XX = +OR-.02 .XXX = +OR-.005 ANG. = +OR-.5 DEG	CHR: SC	DATE: 07/16/09	NOTE: WARP 11
		PART NO: 2000008311N	ISSUE: 1C

This motor is a stocked item