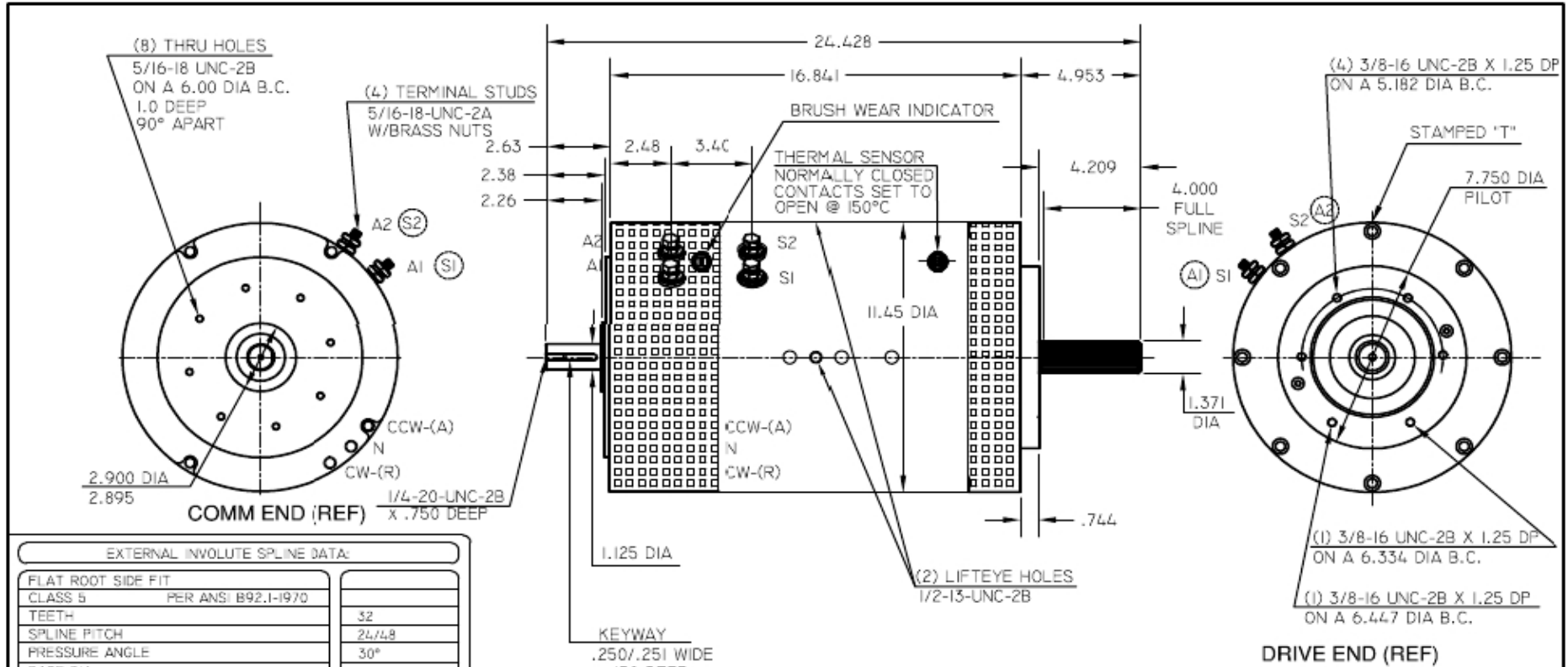


# NetGain Motors, Inc.

800 South State Street / Suite 4 / Lockport, IL 60441 / 630-243-9100 / 630-685-4054 (FAX)

## TransWarp 11™

Part Number 00-08711



EXTERNAL INVOLUTE SPLINE DATA:			
FLAT ROOT SIDE FIT			
CLASS 5	PER ANSI B92.1-1970		
TEETH	32		
SPLINE PITCH	24/48		
PRESSURE ANGLE	30°		
BASE DIA	1.154		
PITCH DIA	1.333		
MAJOR DIA. NOTE 2 (REF.)	1.370/1.371		
MINOR DIA	1.263		
FORM DIA	=1.287		
CIRCULAR TOOTH THICKNESS			
EFFECTIVE (MIN)	.0641	(MAX)	.0654
ACTUAL (MIN)	.0626	(MAX)	.0639
MEASUREMENT OVER PINS (MIN)	1.4513	(MAX)	1.4533
PIN DIAMETER	.0800		
SPLINE CASE HARDENED TO Rc 45-52			
DATA GENERATION FROM ASH GCP?			

**DESCRIPTION**  
 TRANSWARP 11", DOUBLE ENDED, 3 POSITION TIMING, 1.125" DIA. TAIL ASSEMBLED IN THE ADVANCED TIMING POSITION

<b>WE WARFIELD ELECTRIC CO., INC.</b>			
175 INDUSTRY AVENUE/FRANKFORT, IL 60423-1685			
ORIG. DWG FROM	APP BY G.J.L.	DATE 09/20/06	DESCRIPTION OUTLINE
	CHK'D	DATE	SCALE 1:1
TOLERANCE UNLESS OTHERWISE NOTED: .XX = +0R- .11 .XXX = +0R- .005 .XXX = +0R- .5 DEG.	CHK'D	DATE	NOTE TRANSWARP 11"
	APP'D SC	DATE 09/20/06	PART NO. 2000008711N
			ISSUE 02

MOB 09/20/06

This motor is a stocked item